



City of Cedarburg

Community Economic Profile



Population

	City of Cedarburg	Ozaukee County	Wisconsin
Median Age	43.1 years	43.4 years	38.7 years
Male	47.5%	49.0%	49.6%
Female	52.5%	51.0%	50.4%

Source: US Census Bureau, 2009-2013 American Community Survey

Households

	City of Cedarburg	Ozaukee County	Wisconsin
Total Households	4,630	34,109	2,288,332
Avg. Household Size	2.43	2.51	2.43
Total Families	3,129	24,285	1,469,143
Avg. Family Size	2.99	3.01	3.00

Source: US Census Bureau, 2009-2013 American Community Survey

Population Growth (1970-2010)

Year	City of Cedarburg	Ozaukee County	Wisconsin
1970	7,697	54,461	4,417,731
1980	9,005 (17.0%)	66,981 (23.0%)	4,705,767 (6.5%)
1990	10,086 (12.0%)	72,831 (8.7%)	4,891,769 (4.0%)
2000	11,102 (10.1%)	82,317 (13.0%)	5,363,675 (9.6%)
2010	11,412 (2.8%)	86,395 (5.0%)	5,686,986 (6.0%)

Percent population change is shown in parentheses.

Source: US Census Bureau, Decennial Census

Housing

	City of Cedarburg	Ozaukee County	Wisconsin
Total Housing Units	4,932	36,341	2,626,142
Owner-occupied Units	71.6%	77.8%	68.1%
Median Value	\$249,700	\$250,200	\$167,100
Renter-occupied Units	28.4%	22.2%	31.9%
Median Rent	\$815	\$812	\$759

Source: US Census Bureau, 2009-2013 American Community Survey

Taxes

2014 Local Property Taxes:

City of Cedarburg	
Assessment Ratio.....	1.0090
Within the Cedarburg School District	
Net Rate/\$1,000.....	\$18.61
Equalized Rate/\$1,000	\$18.77

Source: Ozaukee County Treasurer's Office

Income

	Per Capita Income	Median Household Income
City of Cedarburg	\$35,986	\$69,167
United States	\$28,155	\$53,046
Wisconsin	\$27,523	\$52,413
Ozaukee County	\$42,041	\$75,457

Source: US Census Bureau, 2009-2013 American Community Survey



Labor Force

	City of Cedarburg	Ozaukee County	Wisconsin
Population 16 and older	8,915	69,209	4,537,877
Population in labor force	67.6%	68.6%	67.9%
Population employed	64.3%	64.6%	62.6%
Population unemployed	3.3%	3.9%	5.3%

Source: US Census Bureau, 2009-2013 American Community Survey

Employment by Industry

Total primary jobs in the City of Cedarburg	4,305
Total primary jobs in Ozaukee County	36,081

Primary Employment by industry category for workers employed in the City of Cedarburg:

Industry	Number Employed	Percent
Manufacturing	814	18.9%
Health Care and Social Assistance	560	13.0%
Retail Trade	516	12.0%
Educational Services	474	11.0%
Accommodation and Food Services	387	9.0%
Professional, Scientific, and Technical Services	300	7.0%
Finance and Insurance	278	6.5%
Administration & Support, Waste Management and Remediation	180	4.2%
Other Services (excluding Public Administration)	179	4.2%
Public Administration	164	3.8%
Wholesale Trade	151	3.5%
Construction	79	1.8%
Information	75	1.7%
Arts, Entertainment, and Recreation	59	1.4%
Real Estate and Rental and Leasing	35	0.8%
Management of Companies and Enterprises	33	0.8%
Agriculture, Forestry, Fishing and Hunting	16	0.4%
Transportation and Warehousing	5	0.1%

Source: U.S. Census Bureau, OnTheMap Application, 2011

Major Employers

Employer	Industry
Cedarburg School District	Elementary and Secondary Schools (100-249 employees)
City of Cedarburg	Executive and Legislative Offices (100-249 employees)
BMO Harris Bank	Commercial Banking (100-249 employees)
Olsen's Piggly Wiggly	Supermarkets and Other Grocery (100-249 employees)
Cedar Springs Health & Rehabilitation	Nursing Care Facilities (100-249 employees)
Carlson Tool and Mfg Corp.	Industrial Mold Manufacturing (100-249 employees)
Kemps Dairy	Fluid Milk Manufacturing (50-99 employees)
Advanced Technology International	Fabricated Metal Product Manufacturing

Source: Wisconsin Department of Workforce Development, Quarter 2/2013, City of Cedarburg

Business Incentives

The City of Cedarburg prides itself on its support of retail, commercial and industrial commerce that makes Cedarburg a great place to locate a business. The City welcomes new businesses to be a part of the vibrant and diverse business community.

The City of Cedarburg offers a variety of business incentives:

- Low interest rate loan programs to include:
 - Revolving Loan Fund
 - Economic Development Loan Program
- Available commercial space is listed on the City website under the economic development tab.
- Economic Development office is available to assist business owners and developers.

Education

Educational Attainment:

	City of Cedarburg	Ozaukee County	Wisconsin
Bachelor's Degree or Higher	53.3%	44.9%	26.8%
High School Degree or Higher	97.6%	96.1%	90.4%

Source: US Census Bureau, 2009-2013 American Community Survey

School District Performance

The City of Cedarburg is served by the Cedarburg School District and the Mequon-Thiensville School District.

School District	Average ACT Score	HS Completion Rate (4 year)
Cedarburg	25.3	97.8%
Mequon-Thiensville	26.0	98.7%
Wisconsin	22.2	88.6%

Source: Wisconsin Department of Public Instruction, 2013-2014 School Year (Completion rates for 2014 cohort)

Colleges, Universities, and Technical Schools

Postsecondary Educational Institutions within 25 miles (1,000 students or more):

- University of Wisconsin-Milwaukee
- Milwaukee Area Technical College
- Marquette University
- Concordia University
- Cardinal Stritch University
- Carroll University
- Milwaukee School of Engineering
- Alverno College
- Mount Mary University
- Medical College of Wisconsin
- Wisconsin Lutheran College

Source: National Center for Education Statistics, College Navigator

Transportation

Highways

- Interstate Highway 43 (four miles east)
- State Highways 60 and 181
- County Highways C, I, and T

Public Transit

Ozaukee County Transit offers Ozaukee County Express bus service along I-43 and Shared-Ride taxi service throughout the county (www.ozaukeetransit.com).

Multi-Use Trail

The Ozaukee Interurban Trail, a 30-mile paved trail, the majority of which is off-road, runs through the City of Cedarburg and provides opportunities for biking, in-line skating, walking, running, and cross-country skiing.

Air

Commercial airline service is available at:

- Milwaukee's General Mitchell International Airport (30 miles south)
- Chicago's O'Hare International Airport (100 miles south)

Rail

Air rail freight service is provided by Canadian National Railway. Passenger rail service, provided by Amtrak, is available at the Milwaukee Intermodal Station, 22 miles south.

Water

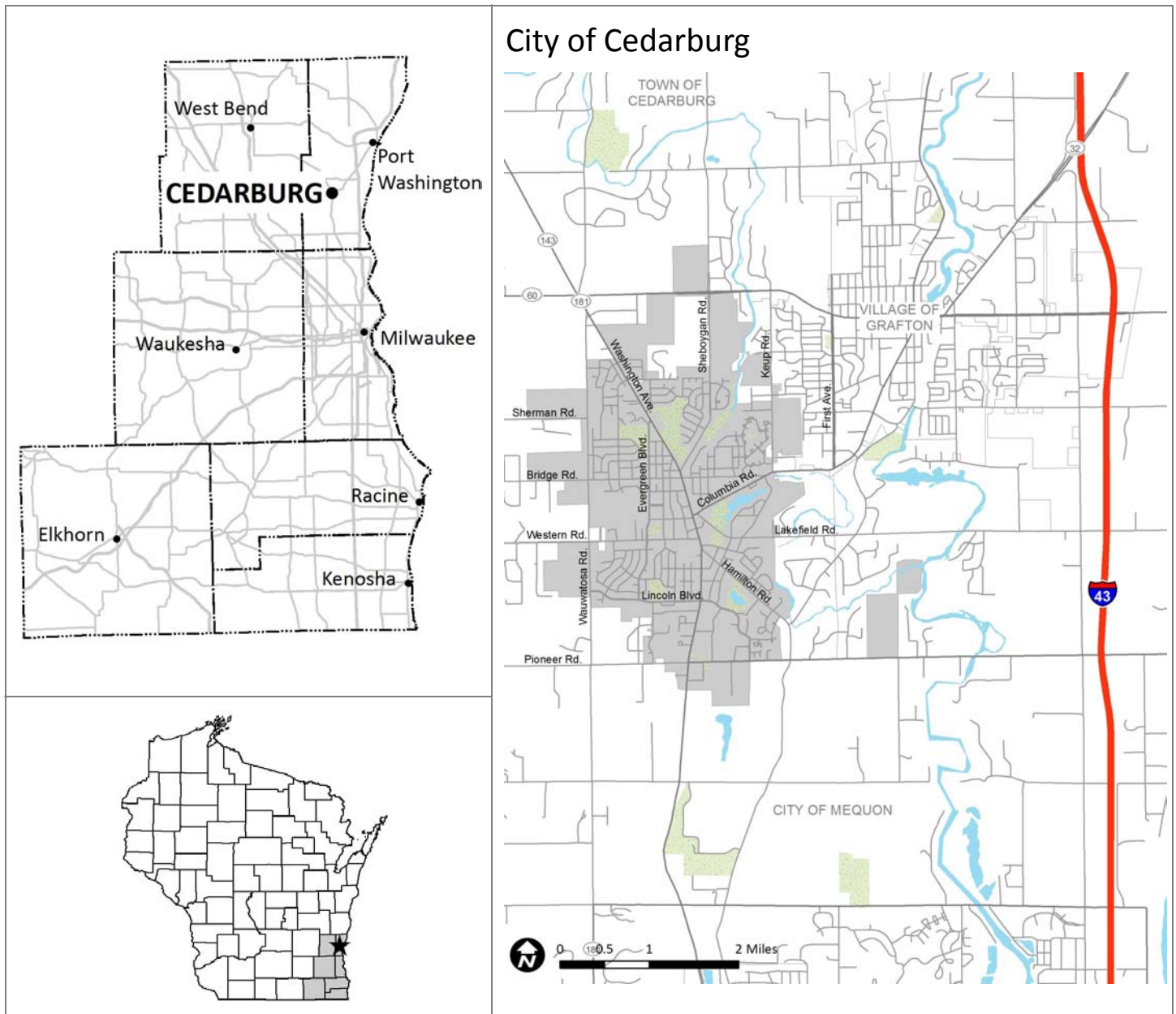
- Port Washington Marina: 10 miles northeast
- Port of Milwaukee: 25 miles south

Amenities

Located just 20 miles north of Milwaukee near Interstate 43 and Highway 60, the city has access to all that Metropolitan Milwaukee offers, but boasts its own award winning school system, seasonal festivals, visual and performing arts and thriving commerce activity. Historic downtown offers a variety of cultural and artistic museums, shops and events. Recreation abounds in dozens of parks, bike trails, lakes and the nearby beautiful Lake Michigan shoreline.

The City of Cedarburg also has its own locally owned and operated electric and water utility, Cedarburg Light & Water.





Local Contacts

**City of Cedarburg
Economic Development**
W63 N645 Washington Avenue
Cedarburg, WI 53012
(262) 387-2050
www.ci.cedarburg.wi.us

Ozaukee Economic Development
121 W. Main Street
Port Washington, WI 53074
(262) 238-7730
www.ozaukeebusiness.org

Ozaukee County UW-Extension
121 W. Main Street
Port Washington, WI 53074
(262) 284-8288
www.ozaukee.uwex.edu

Cedarburg Chamber of Commerce
W61 N480 Washington Ave.
Cedarburg, WI 53012
(262) 377-5856
www.cedarburg.org

Note: Because of sampling variability, some estimates from the US Census Bureau, 2009-2013 American Community Survey may not be statistically different from one another or from estimates for other geographic areas not listed in this profile.

Prepared by Kate Pawasarat, Community Development Educator,
Ozaukee County UW-Extension
in conjunction with Katie Culotta, Marketing and Business Coordinator,
Ozaukee Economic Development July 2015

**UW
Extension**
Ozaukee County