



OZAUKEE COUNTY

Wisconsin

Community Economic Profile



Households

	Ozaukee	Wisconsin
Total Households	34,109	2,288,332
Avg. Household Size	2.51	2.43
Total Families	24,285	1,469,143
Avg. Family Size	3.01	3.00

Source: US Census Bureau, 2009-2013 American Community Survey

Housing

	Ozaukee County	Wisconsin
Total Housing Units	36,341	2,626,142
Owner-occupied Units	77.8%	68.1%
Median Value	\$250,200	\$167,100
Renter-occupied Units	22.2%	31.9%
Median Rent	\$812	\$759

Source: US Census Bureau, 2009-2013 American Community Survey

Population

	Ozaukee County	Wisconsin
Median Age	43.4 years	38.7 years
Male	49.0%	49.6%
Female	51.0%	50.4%

Source: US Census Bureau, 2009-2013 American Community Survey

Population Growth (1970-2010)

Year	Ozaukee County	Wisconsin
1970	54,461	4,417,731
1980	66,981 (23.0%)	4,705,767 (6.5%)
1990	72,831 (8.7%)	4,891,769 (4.0%)
2000	82,317 (13.0%)	5,363,675 (9.6%)
2010	86,395 (5.0%)	5,686,986 (6.0%)

Percent population change is shown in parentheses.

Source: US Census Bureau, Decennial Census

Income

	Per Capita Income	Median Household Income
Ozaukee County	\$42,041	\$75,457
Wisconsin	\$27,523	\$52,413
United States	\$28,155	\$53,046

Source: US Census Bureau, 2009-2013 American Community Survey





Labor Force

	Ozaukee County	Wisconsin
Population 16 and older	69,209	4,537,877
Population in labor force	68.6%	67.9%
Population employed	64.6%	62.6%
Population unemployed	3.9%	5.3%

Source: US Census Bureau, 2009-2013 American Community Survey

Major Employers

Employer	Industry Description
Concordia University	Colleges and universities (500-999 employees)
Rockwell Automation Inc.	Relay and industrial control manufacturing (500-999 employees)
Columbia St. Mary's Hospital	General medical and surgical hospitals (500-999 employees)
Aurora Medical Center	Offices of physicians, excluding mental health (500-999 employees)
Ozaukee County	Executive and legislative offices, combined (500-999 employees)
Seek Inc.	Temporary help services (250-499 employees)
Pace Industries	Nonferrous metal die-casting foundries (250-499 employees)
DentaQuest LLC	Direct health and medical insurance carriers (250-499 employees)
Allen Edmonds Shoe Corp.	Leather and hide tanning and finishing (250-499 employees)
Telsmith Inc.	Construction machinery manufacturing (250-499 employees)

Source: Wisconsin Department of Workforce Development, 2014

Employment by Industry

Total primary jobs in Ozaukee County.....36,081

Primary Employment by industry category for workers
employed in Ozaukee County:

Industry	Number Employed	Percent
Manufacturing	8,457	23.4%
Health Care and Social Assistance	4,934	13.7%
Retail Trade	3,942	10.9%
Educational Services	2,910	8.1%
Accommodation and Food Services	2,771	7.7%
Professional, Scientific, and Technical Services	2,114	5.9%
Administration & Support, Waste Man- agement and Remediation	1,835	5.1%
Finance and Insurance	1,812	5.0%
Wholesale Trade	1,555	4.3%
Public Administration	1,486	4.1%
Other Services (excluding Public Admin- istration)	1,063	2.9%
Construction	976	2.7%
Arts, Entertainment, and Recreation	493	1.4%
Utilities	403	1.1%
Management of Companies and Enter- prises	309	0.9%
Information	305	0.8%
Transportation and Warehousing	296	0.8%
Real Estate and Rental and Leasing	217	0.6%
Agriculture, Forestry, Fishing and Hunting	182	0.5%
Mining, Quarrying, and Oil and Gas Extraction	21	0.1%

Source: U.S. Census Bureau, OnTheMap Application, 2011

Education

Educational Attainment:

	Ozaukee County	Wisconsin
Bachelor's Degree or Higher	44.9%	26.8%
High School Degree or Higher	96.1%	90.4%

Source: US Census Bureau, 2009-2013 American Community Survey

School District Performance

Ozaukee County is served by the Cedar Grove-Belgium, Cedarburg, Grafton, Mequon-Thiensville, Northern Ozaukee, Port Washington-Saukville, and Random Lake School Districts.

School District	Average ACT Score	HS Completion Rate (4 year)
Cedar Grove-Belgium	22.7	96.3%
Cedarburg	25.3	97.8%
Grafton	23.9	98.6%
Mequon-Thiensville	26.0	98.7%
Northern Ozaukee	22.2	73.5%
Port Washington-Saukville	23.6	97.7%
Random Lake	22.5	96.8%
Wisconsin	22.2	88.6%

Source: Wisconsin Department of Public Instruction, 2013-2014 School Year (Completion rates for 2014 cohort)

Colleges, Universities, and Technical Schools

Postsecondary Educational Institutions within 25 miles (1,000 students or more):

- University of Wisconsin-Milwaukee
- Milwaukee Area Technical College
- Marquette University
- Concordia University
- Cardinal Stritch University
- Carroll University
- Lakeland College
- Milwaukee School of Engineering
- Alverno College
- Mount Mary University
- Medical College of Wisconsin
- Wisconsin Lutheran College

Source: National Center for Education Statistics, College Navigator



Transportation

Highways

- Interstate Highway 43
- State Highways 32, 33, 57, 60, 167, and 181
- County Highways A, C, D, H, I, M, O, Q, T, V, W, Y, CC, KK, LL, MY, and NN

Public Transit

Ozaukee County Transit offers Ozaukee County Express bus service along I-43 and Shared-Ride taxi service throughout the county (www.ozaukeetransit.com).

Air

Commercial airline service is available at:

- Milwaukee's General Mitchell International Airport (20 miles south)
- Green Bay's Austin Straubel International Airport (75 miles north)
- Chicago's O'Hare International Airport (90 miles south)

Rail

Area rail freight service is provided by Canadian National Railway, Union Pacific Railroad, and Wisconsin and Southern Railroad. Passenger rail service, provided by Amtrak, is available at the Milwaukee Intermodal Station, 12 miles south.

Water

Lake Michigan access:

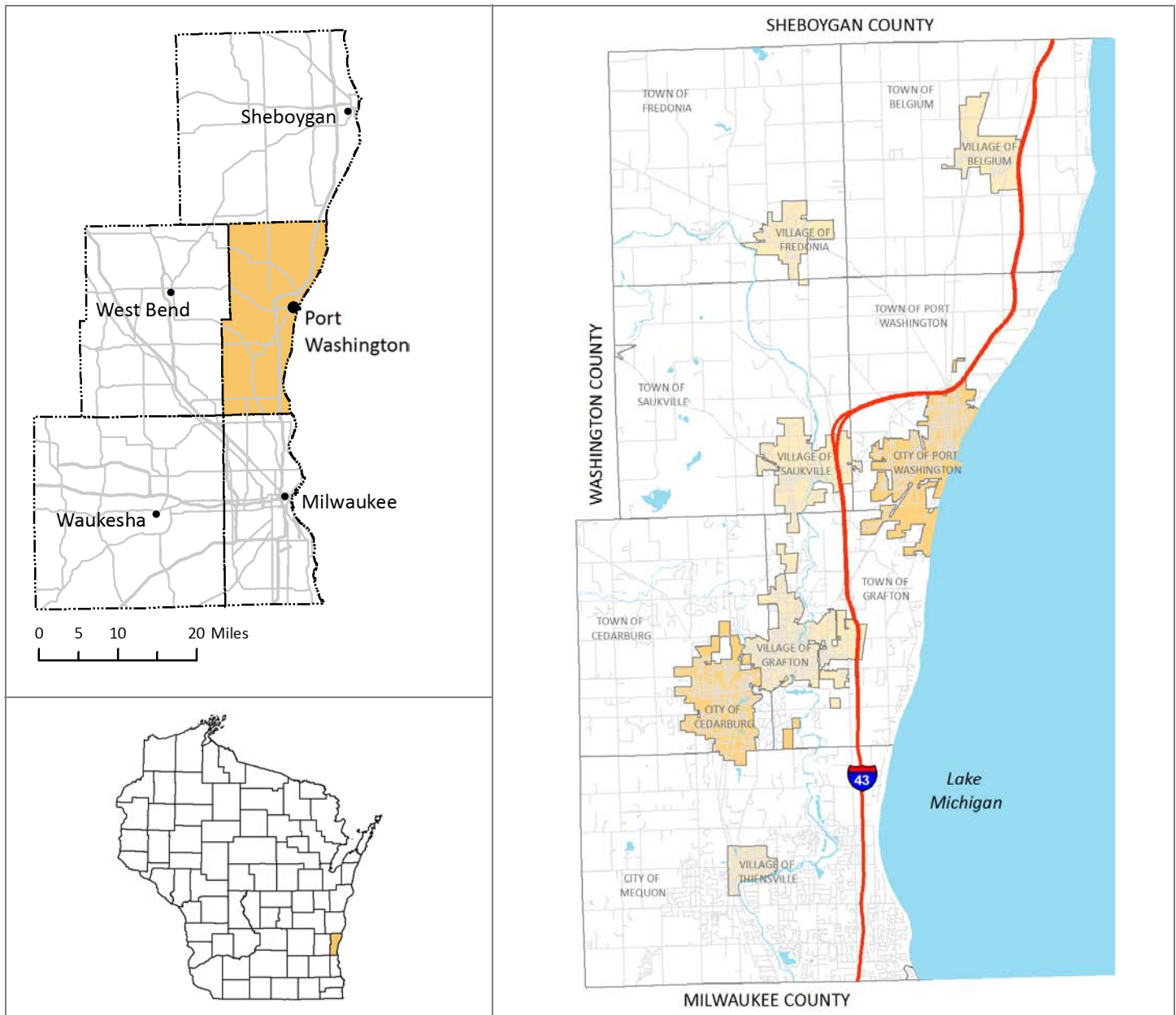
- Harrington Beach State Park
- Port Washington Marina
- Port Washington North Beach
- Port Washington South Beach Kayak and Canoe Launch
- Lion's Den Gorge Nature Preserve
- Port of Milwaukee (15 miles south)

Amenities

Located just fifteen minutes north of downtown Milwaukee, Ozaukee County is an ideal location to visit, live, or locate a business. With high performing schools, a wealth of cultural amenities, and many outstanding natural areas, parks, and opportunities for recreation, it's easy to see why Forbes Magazine ranked Ozaukee County number two in the country to raise a family in 2008.

Home to approximately 87,000 residents, Ozaukee County covers 235 square miles of land, including 25 miles of beautiful Lake Michigan shoreline, 15 parks and open spaces, and more than 10 golf courses. With a variety of events, festivals, museums, boating, wineries, strawberry picking, shopping areas, excellent fishing, and bike trails there is always something to experience in Ozaukee County.

Ozaukee County is also an ideal place to locate a business, just north of Milwaukee and conveniently linked through the I-43 Corridor. Ozaukee County offers all the features that your business is looking for: an educated skilled workforce, an excellent quality of life and a business-friendly attitude within our communities. It is these advantages that have convinced so many businesses to choose Ozaukee County.



Local Economic Development Contacts

City of Cedarburg: Mary Sheffield
(262) 387-2050
msheffield@ci.cedarburg.wi.us

City of Mequon: Kim Tollefson
(262) 236-2902
ktollefson@ci.mequon.wi.us

City of Port Washington: Randy Tetzlaff
(262) 284-2600
rtetzlaff@ci.port-washington.wi.us

Village of Belgium: Kathleen Olsen
(262) 285-7931
kolsen@village.belgium.wi.us

Village of Fredonia: Sandra Tretow
(262) 692-9125
stretow@village.fredonia.wi.us

Village of Grafton: Jessica Wolff
(262) 375-5303
jwolff@village.grafton.wi.us

Village of Thiensville: Dianne Robertson
(262) 242-3720
drobertson@village.thiensville.wi.us

Village of Saukville: Marilyn Haroldson
(262) 284-9423
comdev@village.saukville.wi.us

Town of Cedarburg: Jim Culotta
(262) 377-4509
jculotta@town.cedarburg.wi.us

Town of Grafton: Amanda Schaefer
(262) 377-8500
aschaefer@townofgrafton.org

For countywide information or information on other communities, contact:

Ozaukee Economic Development
Kathleen Cady Schilling
(262) 238-7730
kschilling@co.ozaukee.wi.us

Note: Because of sampling variability, some estimates from the US Census Bureau, 2009-2013 American Community Survey may not be statistically different from one another or from estimates for other geographic areas not listed in this profile.

Prepared by Kate Pawasarat, Community Development Educator,
Ozaukee County UW-Extension
in conjunction with Katie Culotta, Marketing and Business Coordinator,
Ozaukee Economic Development July 2015

UW
Extension
Ozaukee County